

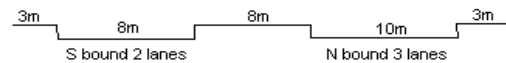
YEAR 2016

COVERAGE (B) STATION 4212

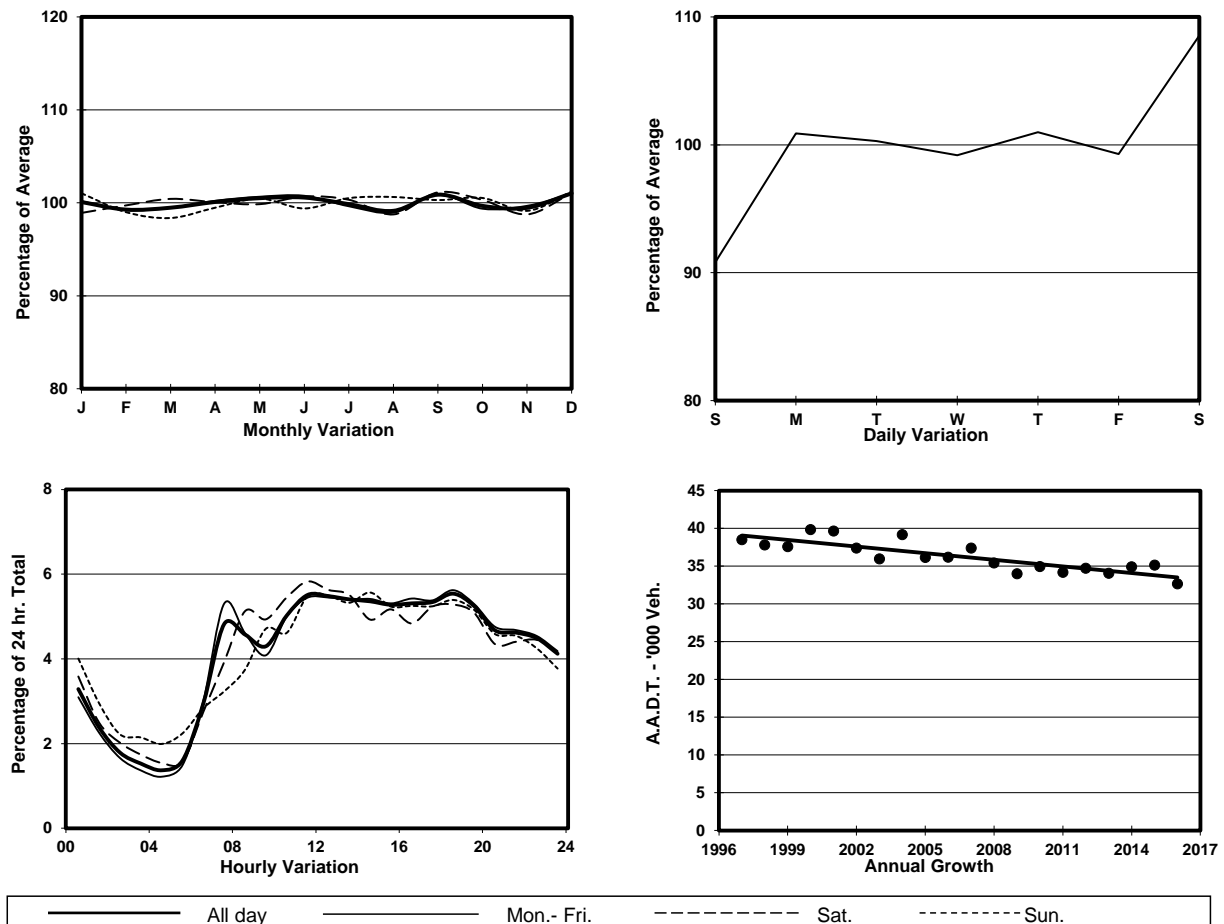
ROAD NETWORK MAJOR

ROAD TYPE PRIMARY DISTRIBUTOR

LINK CHATHAM RD N & MA TAU WAI RD (from SAN LAU ST to CHI KIANG ST)



1. TRAFFIC FLOW VARIATION AND GROWTH



2. TRAFFIC CHARACTERISTICS (BY DIRECTION)

Parameter	All - Day	Mon. - Fri.	Sat.	Sun.
SOUTH BOUND				
A.A.D.T.	13770	13410	16010	13770
R 12 / 24 - %	60.4	60.6	59.9	59.7
R 16 / 24 - %	78.9	79.6	78.5	75.9
AM Peak Hour	0700-0800	0700-0800	0800-0900	0900-1000
One-way flow at AM peak hour	760	840	850	720
T - % (AM)	-	13	-	-
PM Peak Hour	1800-1900	1800-1900	1800-1900	1800-1900
One-way flow at PM peak hour	720	700	830	740
T - % (PM)	-	13	-	-
Prop.of commercial vehicles - 16 hr.	-	17.3	-	-
NORTH BOUND				
A.A.D.T.	18890	19450	19620	16040
R 12 / 24 - %	63.1	63.7	63.5	59
R 16 / 24 - %	82.5	83.2	81.5	79.5
AM Peak Hour	0800-0900	0800-0900	0800-0900	0900-1000
One-way flow at AM peak hour	880	930	980	680
T - % (AM)	-	18.8	-	-
PM Peak Hour	1800-1900	1800-1900	1700-1800	1600-1700
One-way flow at PM peak hour	1090	1150	1090	910
T - % (PM)	-	20.4	-	-
Prop.of commercial vehicles - 16 hr.	-	17.3	-	-

3. OTHER INFORMATION AND COMMENT

Coverage (B) Station 4212
Year 2016

4. Vehicle classification and occupancy - Monday to Friday

Time		Class of vehicle									
		Motor	Private	Taxi	Private	PLB	Goods veh.		Non	Fr. Bus	
		Cycle	Car		LB		Light	M & H	Fr. Bus	SD	DD
0700-0800	Pro	7.7	23.2	27.2	1.7	12.0	12.2	1.5	3.0	0.0	11.4
	Ocp	1.1	1.5	2.2	6.9	9.5	1.6	1.3	16.3	0.0	42.6
0800-0900	Pro	4.8	35.0	12.0	1.7	9.5	16.5	3.9	2.8	0.0	13.7
	Ocp	1.0	1.4	1.9	4.7	11.1	1.7	1.5	14.9	0.0	42.2
0900-1000	Pro	0.7	25.4	18.3	0.4	8.5	22.6	7.8	1.1	0.0	15.3
	Ocp	1.0	1.3	1.7	1.0	7.3	1.7	1.6	19.3	0.0	21.4
1000-1100	Pro	1.9	25.0	24.2	0.3	5.4	26.1	2.7	2.2	0.0	12.2
	Ocp	1.3	1.4	1.6	1.0	8.2	1.6	1.4	14.0	0.0	22.9
1100-1200	Pro	4.2	20.5	20.3	2.7	5.7	32.6	2.2	2.5	0.0	9.3
	Ocp	1.0	1.5	1.8	3.5	6.8	1.6	1.2	20.7	0.0	26.6
1200-1300	Pro	5.3	27.7	25.5	1.9	5.9	14.9	1.9	5.0	0.0	12.0
	Ocp	1.1	1.4	1.8	3.8	6.5	1.5	1.2	23.1	0.0	23.3
1300-1400	Pro	2.6	25.4	20.5	0.8	3.4	27.3	3.9	4.2	0.0	11.9
	Ocp	1.0	1.4	1.8	6.0	9.7	1.5	1.7	14.3	0.0	24.4
1400-1500	Pro	4.6	30.3	18.9	0.8	5.4	22.4	3.8	2.8	0.0	11.1
	Ocp	1.0	1.6	1.9	1.3	9.9	1.5	1.3	10.2	0.0	23.9
1500-1600	Pro	4.7	30.1	18.5	1.3	4.5	25.8	2.4	1.1	0.0	11.7
	Ocp	1.1	1.6	1.8	5.6	7.6	1.7	1.2	13.8	0.0	24.1
1600-1700	Pro	3.8	30.5	22.6	1.1	5.7	17.7	3.0	2.5	0.0	13.1
	Ocp	1.1	1.5	1.6	4.3	8.9	1.5	1.2	5.8	0.0	28.8
1700-1800	Pro	6.0	34.0	20.0	0.7	8.0	15.4	1.4	2.2	0.0	12.2
	Ocp	1.1	1.3	2.2	2.0	8.8	1.5	1.5	23.9	0.0	40.0
1800-1900 Peak hour	Pro	7.3	34.6	20.7	0.0	9.7	10.1	0.9	4.2	0.1	12.4
	Ocp	1.1	1.5	2.0	0.0	9.7	1.6	1.0	18.9	30.0	55.6
1900-2000	Pro	8.4	37.2	20.9	0.0	8.4	8.1	1.3	1.8	0.1	13.9
	Ocp	1.2	1.4	2.1	0.0	9.6	1.6	1.6	2.1	25.0	39.6
2000-2100	Pro	3.4	29.4	32.2	0.0	11.3	6.9	0.6	1.6	0.1	14.6
	Ocp	1.2	1.7	2.0	0.0	8.8	1.6	1.5	7.8	11.0	25.5
2100-2200	Pro	4.2	27.6	36.6	0.3	10.9	5.1	0.6	0.6	0.1	13.8
	Ocp	1.2	1.7	2.0	2.0	9.0	1.8	1.0	5.5	31.0	30.8
2200-2300	Pro	5.9	26.6	37.7	0.0	11.2	3.9	0.3	0.7	0.2	13.5
	Ocp	1.1	1.9	2.2	0.0	7.7	1.6	1.0	1.0	22.0	28.6
16 hours	Pro	4.8	29.0	23.1	0.9	7.7	17.0	2.4	2.4	0.1	12.5
	Ocp	1.1	1.5	1.9	4.2	8.8	1.6	1.4	15.2	23.7	31.9

Legend

Pro. Proportion of vehicles in % (Sum may not add up to 100% due to figure rounding)*

Ocp. Average occupancy of vehicles including both driver and passengers*

M&H Medium and Heavy

***** All traffic data are collected from combined bounds except for one way traffic